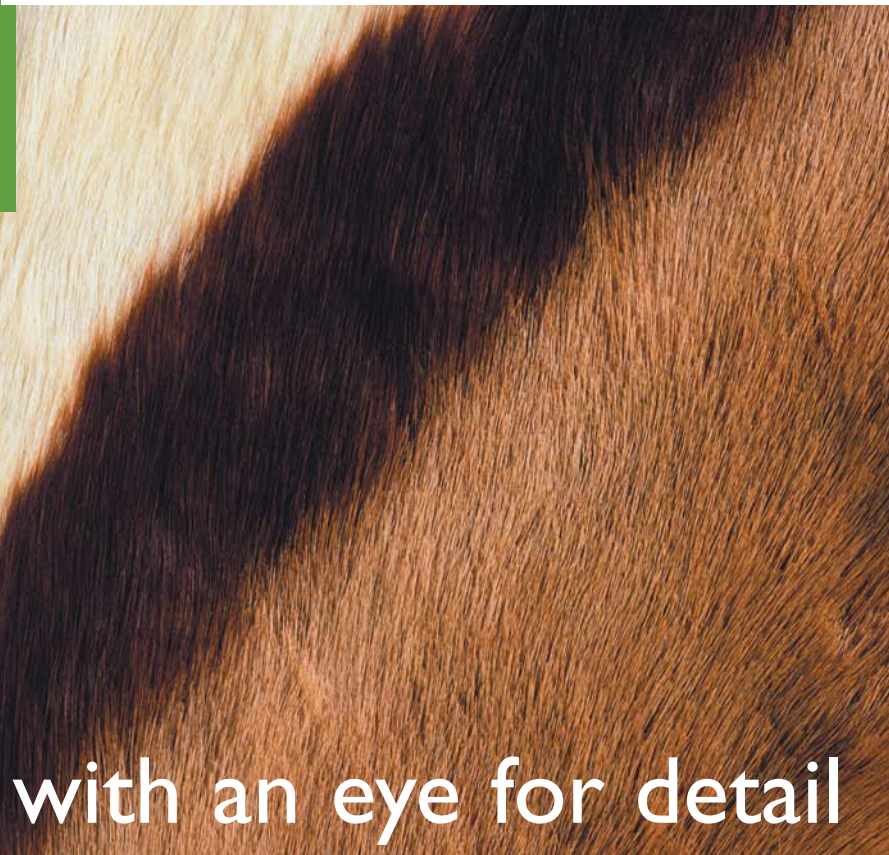


Overall understanding with an eye for detail



Overall understanding with an eye for detail



☐ Yes, I am going to visit
Electronica 2006 and
wish to receive
_____ (number of) tickets.

☐ Yes, I am going to visit
Electronica 2006.
Please contact me to set
up an appointment during
the fair.

☐ No, I shall not be visiting
Electronica 2006, but would
like to be kept informed
about Semecs.

Company name: _____

Contact: _____

Position: _____

Address: _____

Postal code / City / Country: _____

Telephone / Fax: _____

E-mail: _____

Semecs International bv
P.O. Box 203
NL-5400 AE Uden
the Netherlands

19th International Trade Fair for components and Assemblies in Electronics

electronica 2006



Semecs International bv P.O.
Box 203
NL-5400 AE Uden
the Netherlands
t: +31 (0)413 339 700
f: +31 (0)413 339 799
www.semecs.com

Invitation

First to Munich...

With a staff of 1300, Semecs is a leading service provider on the European EMS market. At the Electronica 2006 trade show, to be held November 21-24th in Munich (Germany), we will be happy to present our organisation, structure, possibilities and new image. We are sure that our one-stop shopping possibilities can also be of added value to you - sharing the essence of electronics. You are welcome to visit us at our stand, no. **B1.331**.

... and then to Africa

Electronica 2006 provides a wonderful opportunity for you and for us to meet (again) and exchange ideas. About the EMS market and partnership, about developments in the near future and... about faraway journeys. In our stand you will have a chance to win an African safari adventure! Read more about it in the enclosed participation card.

Of course, we will be glad to send you tickets for Electronica 2006 and, if you wish, schedule an appointment for you during the trade show. If you are not able to visit Electronica 2006, we will be pleased to keep you informed. Just fill out the reply card and send or fax the card to our address.

Nov 21-24
München

Semecs
sharing the essence of electronics